

GROUND LEASE

2.4 Acres - Chattahoochee

Graveled, fenced, hook-up's for Modular office

LOCATION: 1522 Huber Street
(one block from Chattahoochee Avenue @ Ellsworth)

SIZE: 2.4 Acres

ZONING: M - 2 Heavy Industry

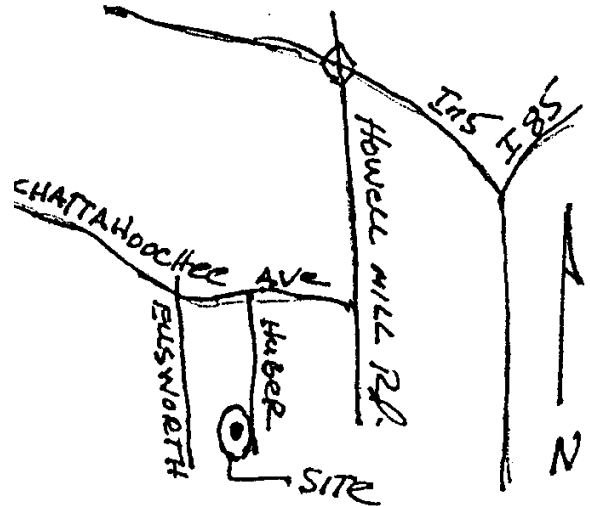
UTILITIES: All at the property

IMPROVEMENTS: Fence and gates in place
Level and gravelled (small loss on back side)
Water, sewer and electrical at site for Modular office hook-up
Environmental clearance

RENT: \$3,740.00/Month

TERM: 3 -5 Years

SUBMITTED: Walter Boden, SIOR, CCIM



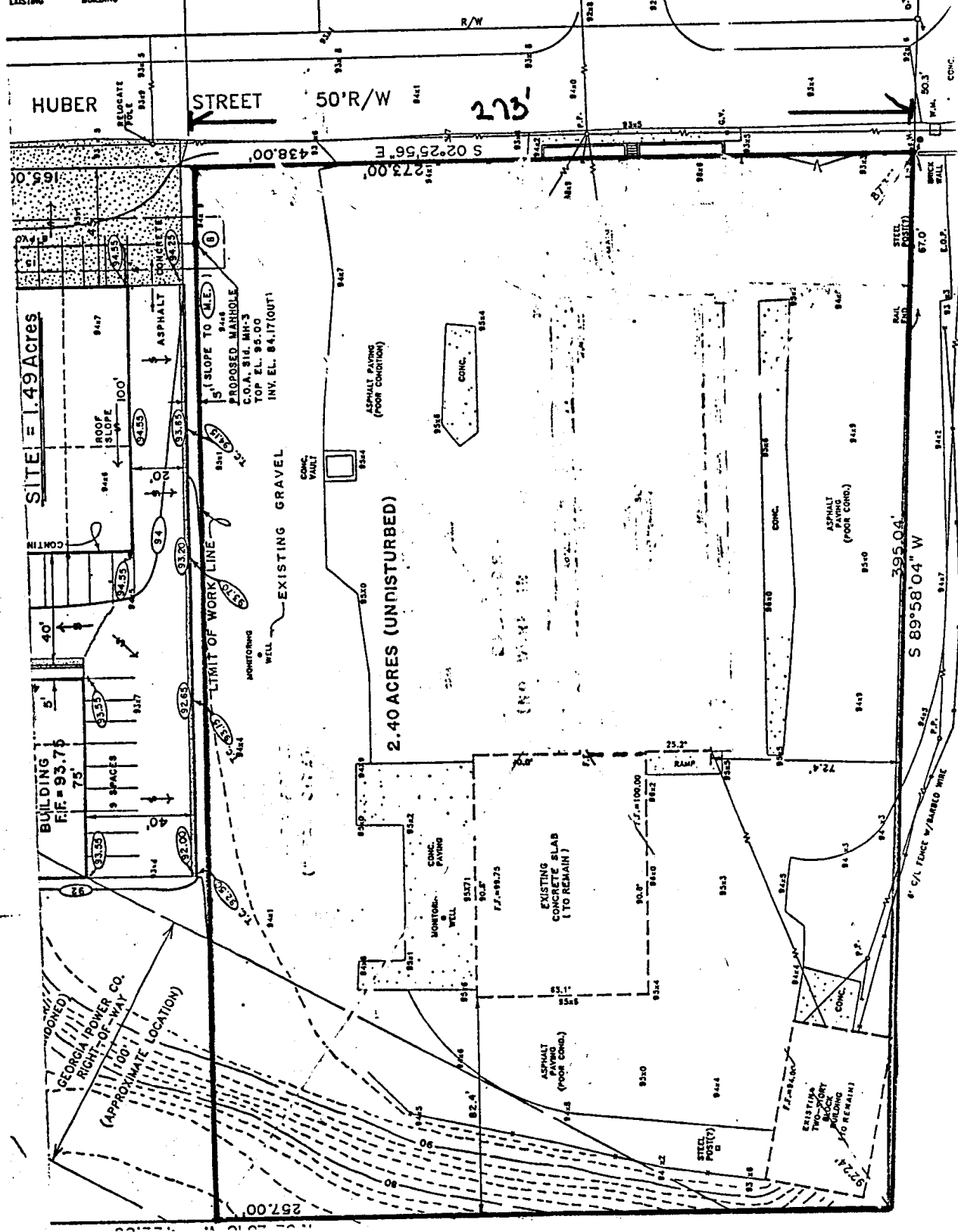
John Hunsinger & Company

1627 Peachtree Street, N.E., Suite 333

Atlanta, Georgia 30309

(404) 881-6813 - Fax (404) 876-2845

Information presented herein was obtained from the Owner or other sources deemed reliable. No warranty or representation expressed or implied, is made as to the accuracy of the information contained herein, which is submitted subject to errors, omissions, change or price, rental or other conditions, withdrawal without notice, or special listing conditions imposed by the Owner.



795.04'

2.4 Acres
1522 Huber Street